

GREAT LAKE VIEW!



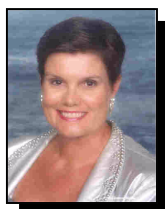
6808 Satinleaf RD S 204

\$269,900.00

Area:	CALUSA BAY	Bathrooms:	2
Style:	LOW RISE	Bedrooms:	2 + DEN
Square Feet:	1696	Master Bedroom:	12 x 14
Year built:	1997	Bedroom #2:	11 x 11
Taxes:	\$1,238.00 (Homestead)	Livingroom:	14 x 23
Parking:	1 Carport Space	Diningroom:	12 x 10
Heating:	Electric	Kitchen:	13 x 15
Air Conditioning:	Electric	Den:	11 x 11
Condo Fees:	\$1,330.00 Quarterly	Laundry:	IN UNIT
Application Fee:	\$50.00	Minimum days of	
# Leases a Year:	3	Lease:	30

This bright and sunny unit has a relaxing lanai with a peaceful lake view. Kitchen is open to living area and den is open to kitchen for entertaining. A separate dining room is an added plus. Bedrooms are separate from one another. Carport space is close to the unit. Calusa Bay has a large swimming pool, a tennis court, a socially active clubhouse, and an exercise facility.

ML#207002435. Note: ~~Garbage disposal does not work. Both garbage disposal and dishwasher being sold in "as is" condition.~~ For more pictures of this sunny unit go to: www.NaplesBuys.com.



Lynn H. Wilber, GRI, e-PRO, Broker-Associate
Downing Frye Realty, Inc.
Business: 239-594-2780
www.NaplesBuys.com
Lynn@NaplesBuys.com

